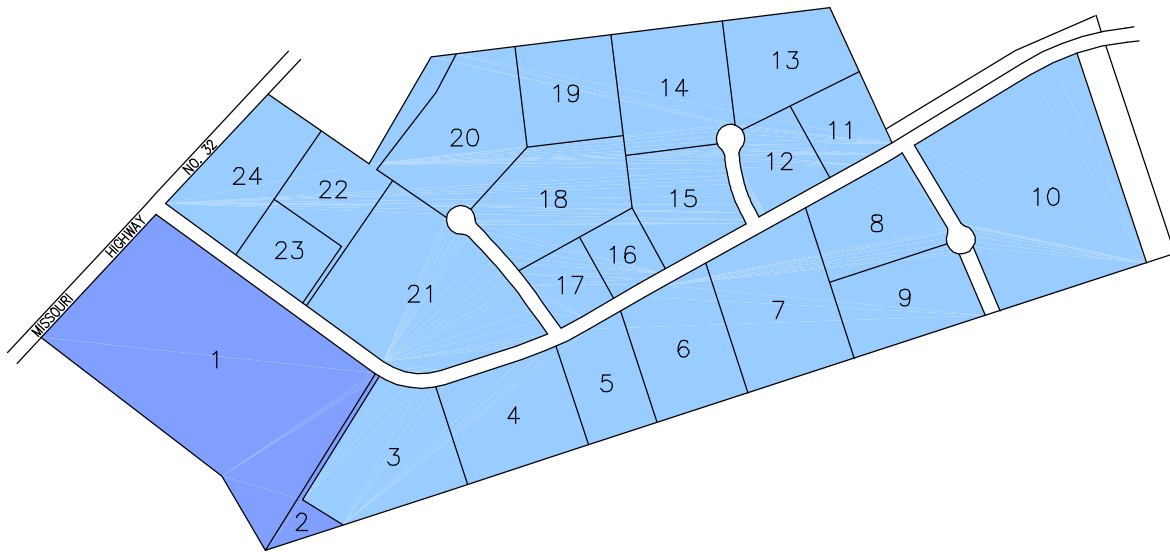


STE. GENEVIEVE BUSINESS PARK



- | | | | |
|----|------------------|----|-----------------------|
| 1 | Community Center | 13 | Storm Water Retention |
| 2 | Water Tower | 14 | Vacant ±5.1 Ac. |
| 3 | Vacant ±6.0 Ac. | 15 | Vacant ±3.9 Ac. |
| 4 | Vacant ±5.5 Ac. | 16 | Vacant ±1.8 Ac. |
| 5 | Vacant ±3.1 Ac. | 17 | Vacant ±1.8 Ac. |
| 6 | Vacant ±4.7 Ac. | 18 | Vacant ±5.5 Ac. |
| 7 | Vacant ±6.5 Ac. | 19 | Common Ground |
| 8 | Vacant ±4.1 Ac. | 20 | Vacant ±6.0 Ac. |
| 9 | Vacant ±4.4 Ac. | 21 | Vacant ±9.8 Ac. |
| 10 | Vacant ±13.5 Ac. | 22 | Storm Water Retention |
| 11 | Vacant ±2.5 Ac. | 23 | Vacant ±2.3 Ac. |
| 12 | Vacant ±2.5 Ac. | 24 | Vacant ±4.7 Ac. |

